



**MHLABENI**  
BOUTIQUE VILLA  
By Unembeza

## FACT SHEET

Opening  
1 SEPTEMBER  
2019

Pictures are artist Impressions. Decoration might change.

### Connect with nature at Unembeza Boutique Lodge in Hoedspruit, South Africa's wildlife haven

This magnificent 375 m<sup>2</sup> high end villa is the latest addition to the Unembeza Portfolio. Villa Mhlabeni, which means "The World", is fully serviced. Designed around a 75 m<sup>2</sup> open plan kitchen it features a lounge area with fire place, 3 en-suite garden suites with outside showers, a master bedroom with en-suite bathroom with bath. A stunning rooftop terrace overlooking the mountains, outside decks and a heated pool.

The villa is within short distance from Unembeza Lodge and guests have full access to all other facilities such as the bush spa, mountain bikes and gift shop.

Hoedspruit is located between the world-renowned Blyde River Canyon and the Kruger National Park and nature-loving guests will marvel at the beauty and bio-diversity that exists on the doorstep of this boutique bush villa.

Villa Mhlabeni is situated on the greenbelt of the Hoedspruit Wildlife Estate which means our closest neighbours are free roaming general game species such as Giraffes, Zebra, Kudu and Warthogs, but guests must also keep an eye out for our resident leopards which are seen on a regular basis. The absence of lions, elephants, buffalo's and rhino's allow our guests to explore nature and discover their inner ranger either on foot, during a mountain bike outing, or even on horseback.

Unembeza offers a carefully curated selection of custom safari's, tours and activities. We only use approved external safari companies, which means our guests can rest assured that they will receive the best service at all times. We are genuinely a one stop destination where our guests can enjoy everything the Lowveld has to offer.



KRUGER • CANYON • CULTURE • ADVENTURE

Unembeza Boutique Lodge • Hoedspruit, Wildlife Estate  
Tel: +27 63 742 8783 • Email: [reservations@unembeza.com](mailto:reservations@unembeza.com) • [www.unembeza.com](http://www.unembeza.com)



Pictures are artist impressions. Decoration might change.

### Additional Important Information:

- 3 x garden suites with en-suite bathrooms and outside showers.
- 1 x master Bedroom with en-suite bathroom, outside shower and bath.
- Private heated pool.
- Roof top terrace with stunning views of the bush and the mountains.
- Complimentary high-speed internet.
- All rooms have fixed extra length king size beds with mosquito nets.
- Rooms have air-conditioning, hairdryers and organic bathroom amenities.
- Laptop size electronic safes.
- Breakfast and 4 course set dinner (included), lunch on request.
- Access to Unembeza's Bush Spa with traditional African treatments such as Calabash and Rungu stick massages. We also offer manicures and pedicures. The Bush Spa is located at the main lodge.
- Full bar available with the same wine and beverage menu as Unembeza.
- Covered Parking.
- No pets allowed.
- Villa Mhlabeni is not wheelchair friendly
- Activities will be organised in private cars for Mhlabeni guests.

### Rates:

- Lunch platters available at ZAR 175 per person.
- No self-catering or own drinks allowed on the premises.
- All beverages, gratuities, laundry and extra activities are excluded from the rate.
- Rates can change without prior notice, but all confirmed reservations rates will be honoured.

### Payment Policy:

- We require a 50% non-refundable deposit within 48hrs from booking.
- The balance is required 42 days prior to arrival.
- EFT payments are accepted via our South African Nedbank or Dutch bank account.
- Contact us for a secure payment link should you wish to pay via Visa or Mastercard
- We accept no Foreign Currency, Diners Club or American Express Cards.



## Activities and Tours

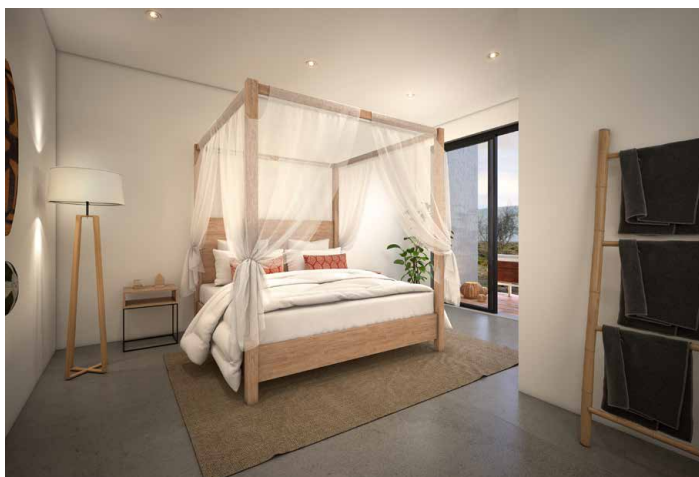
Duration	Price
<b>Kruger National Park Safari</b>	
11 hours (full-day)	2-9 people: ZAR 1,975 pp
<b>Panorama Route</b>	
10 hours	2-9 people: ZAR 1,900 pp
<b>Moholoholo Rehabilitation Centre</b>	
8:30 or 14:00 (4 hours, no shows on Sundays)	2-9 people: ZAR 850 pp
9 hours including boat trip	ZAR 1,850 pp
<b>Sundowner Safari</b>	
4 hours	2-9 people: ZAR 975 pp
<b>Mountain Bike Rental</b>	
Mountain bike rental (up to 3 hours)	ZAR 150 per bike
With private guide (additional per trip)	ZAR 250 per trip
<b>Horse-Back Safari</b>	
1 hour	ZAR 650 pp
2 hours	ZAR 850 pp
<b>Nyani Cultural Village</b>	
4 hours	ZAR 1,100 pp
<b>Hot Air Ballooning</b>	
4 hours	ZAR 5,500 pp
<b>Unembeza Bush Spa</b>	
Spa menu available upon request	

## Room configuration & information:

	Garden Suite	Master Bedroom
nr of units	3	1
m <sup>2</sup>	30	50
sleeps max	2	2
shower outside	✓	✓
bath inside		✓

## 2019 Rates

PAX	1 to 8
Rack rates 2019	ZAR 15,000



KRUGER • CANYON • CULTURE • ADVENTURE

Unembeza Boutique Lodge • Hoedspruit, Wildlife Estate  
 Tel: +27 63 742 8783 • Email: [reservations@unembeza.com](mailto:reservations@unembeza.com) • [www.unembeza.com](http://www.unembeza.com)